

Concrete Spike Roofing Fasteners



Application

Insulation and membrane attachment to structural concrete roof decks

Features and Benefits

- 1/2" mushroom head
- Compresses at 3 contact points to match the tolerance of the drilled hole
- Can stand dynamic loads induced by wind loading
- Ruspert coating

Product Selection

Material No.	Fastener Length	Description	Carton Wt. (lbs.)	Carton Qty.
SH-SC-001	1-1/4"	#14x1-1/4	11	500
SH-SC-002	1-1/2"	#14x1-1/2	11	500
SH-SC-003	2"	S#14x2	16	500
SH-SC-004	2-1/2"	#14x2-1/2	21	500
SH-SC-005	3"	#14x3	22	500
SH-SC-006	3-1/2"	#14x3-1/2	25	500
SH-SC-007	4"	#14x4	31	500
SH-SC-008	4-1/2"	#14x4-1/2	31	500
SH-SC-009	5"	#14x5	35	500
SH-SC-010	5-1/2"	#14x5-1/2	36	500
SH-SC-011	6"	#14x6	20	250
SH-SC-012	7"	#14x7	23	250
SH-SC-013	8"	#14x8	28	250
SH-SC-014	9"	#14x9	30	250
SH-SC-015	10"	#14x10	33	250
SH-SC-016	11"	#14x11	14	100
SH-SC-017	12"	#14x12	15	100
SH-SC-018	14"	#14x14	17	100

Coating and Corrosion

15/15 Kesternich per FM 4470

1500 hour salt spray per ASTM B117

Ruspert coating

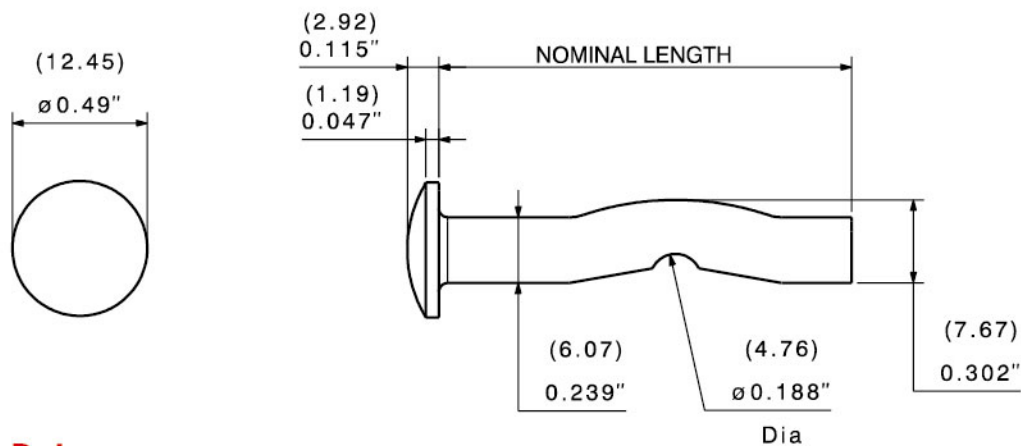
Installation and Application Considerations
Tools: ANSI 1/4" diameter (0.268-0.260 dia.) drill bit. Drill hole depth at least 1/2" beyond the anticipated embedment depth. Clean the hole and drive Dekspike flush against the plate or material being fastened.

Material

- Structural concrete: Min penetration: 1" (Min penetration for 1-1/4" length: 7/8")

Use with

- Batten Bar
- Steel insulation plates
- Steel membrane plates



Performance Data

Pull Out Strength

2000 psi Structural Concrete		3000 psi Structural Concrete		4000 psi Structural Concrete	
1" (25.4 mm)	620 lbf / 2757N	1" (25.4 mm)	775 lbf / 3447 N	1" (25.4 mm)	835 lbf / 3714 N
1-1/4" (31.2 mm)	830 lbf / 3692 N	1-1/4" (31.2 mm)	1100 lbf / 4893 N	1-1/4" (31.2 mm)	1210 lbf / 5382 N